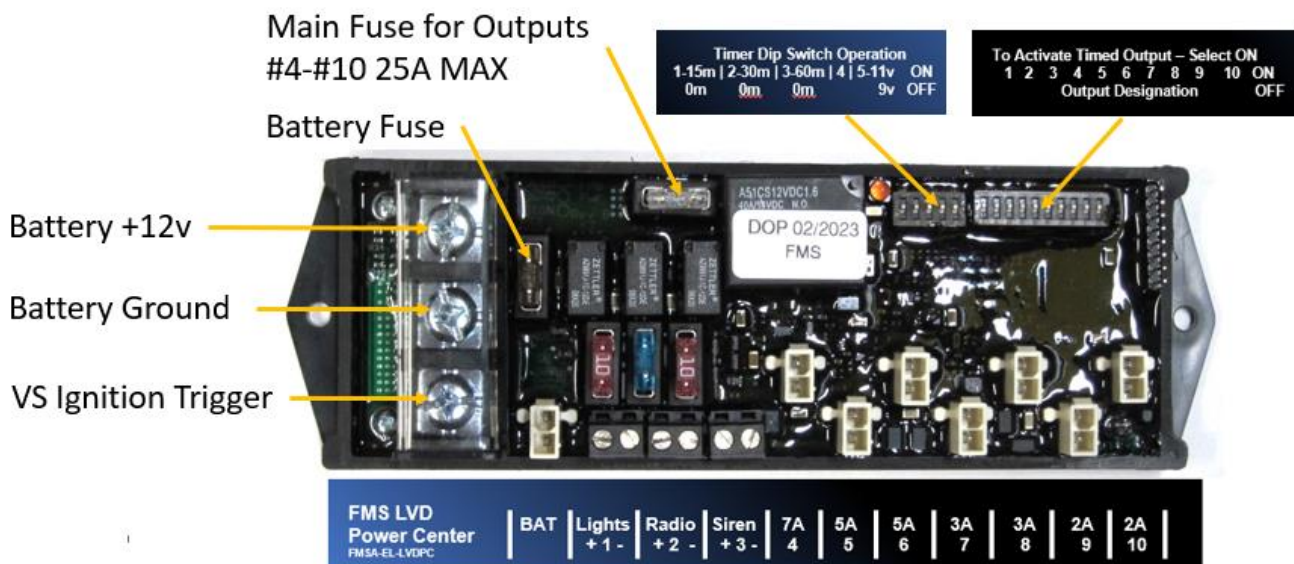


Installation Instructions & Use Recommendations

FMS Accessories – FMS LVD Power Center

These instructions must be read carefully and thoroughly **before** beginning work. FMS Solutions, LLC accepts no liability for damage caused by failure to observe the installation instructions or use recommendations.

Installation of this accessory does not change the factory specified load limits for the motorcycle.



The FMS LVD Power Center provides a (Low Voltage Disconnect) connection bank for law enforcement / public service vehicles. The 50A Power Center provides separate managed power outlets for all standard authority functions for motorcycle / utility vehicle use. All power outlets are powered-up by Ign. ON, can either be powered OFF with Ignition OFF, or continue to be powered for a specific time after ignition-OFF, based on timer duration selected. The timer duration is adjustable in 15-minute increments up to 1.75 hours after ignition-OFF.

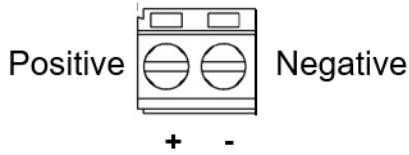
All other outlets are LVD managed, meaning that if the voltage in the battery(s) that the LVD Power Center is connected to drops below either 9V or 11V (selectable) for more than 30 seconds, the Power Center shuts down to protect the battery(s). One fused outlet is provided for direct battery connection (fused, no LVD or timed function), primarily for an external charging port.

Inputs are Bat +, Bat - and IGN. The IGN input is a voltage sensing input, so if no dedicated IGN input is available, you can connect to sources such as taillight or other accessories that are ON when the IGN is ON without tripping bulb monitors, etc. Note that if a starter load-shedding power source is used, the non-timer selected outputs will temporarily shut OFF when the starter is activated.

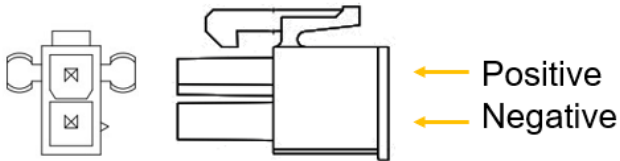
All outputs have either a selectable ATM fuse (up to 15A) or are load managed circuit, with a variety of load choices. Three-15A outputs (Emergency Lighting, Siren, Mobile Radio), Seven load managed outputs 1-7A, 2-5A, 2-3A, 2-2A (Radar, Set-Com/PVP, PC Charger, Video, BT Amp, Etc.) plus the BAT direct connection (suggest 5A for battery charger / power outlet). The 10 outputs that can be time managed are selected via a 1-10 DIP switch. This feature enables you to select the proper output based on load rating, then decide with each output whether you want it time managed or not. Outputs 1-3 are higher-current and use a set-screw wire connection. Outputs 4-10 and BAT use the 2-conductor Accessory Connection Plugs provided (FMSA-EL-ACP). Outputs 4-10 are load managed, so no in-line fuses are needed. Outputs shut-down when load exceeds Amperage rating and restart when overload condition is removed. Main fuse (25A) limits the sum of all loads on outputs 4-10.

Connections

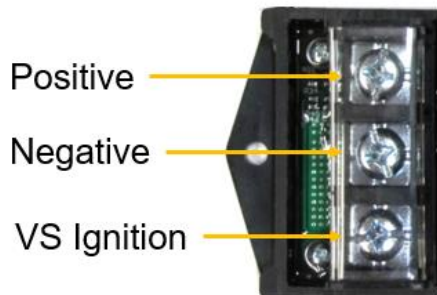
The FMS LVD Power Timer connection polarity: Connections #1 through #3



The FMS LVD Power Timer connection polarity: Connections #4 through #10 and BAT



The FMS LVD Power Timer connection polarity: Main Power & Trigger



Cable Size Recommendation: Minimum #10 AWG Cable Connection w/Crimped Ends .250" Ø

Specifications:

Maximum Suggested Load Rating: 50A

Parasitic Load when OFF: <50 µA

LED Indicator: Steady IGN ON, Blinking during run-time count-down after ignition OFF

Low Voltage Disconnect: Set via DIP #5 OFF = 9 volts ON = 11volts

Note LVD activates when voltage drops below preset number for 30 seconds. This buffers for momentary loads such as starter activation, ABS operation, siren blips, etc.

Timer Duration Selection: 15-minute increments – cumulative up to 1.75 hours

#1 #2 #3 #4 #5 (DIP #4 is not used at this time)

DIP ON 15 30 60 11V LVD

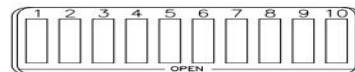
DIP OFF 0 0 0 9V LVD

Example: #2 & #3 ON = 30 + 60 = 90 minutes

Activating Timed Outputs:

Select ON for outputs OFF to be Timed after IGN OFF

Select OFF for outputs OFF with IGN OFF

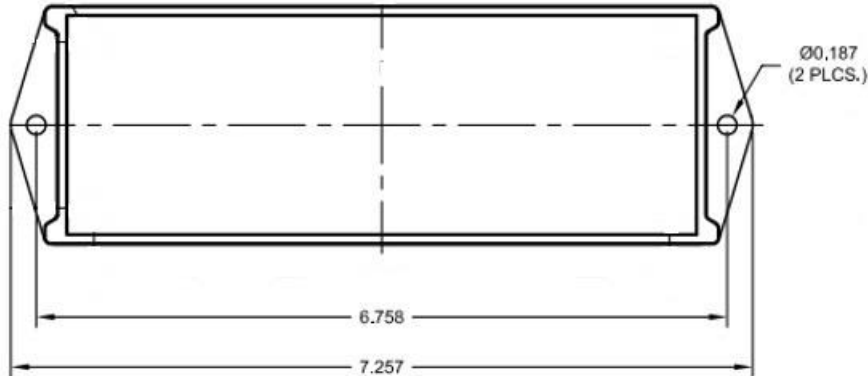


Mounting:

The FMS LVD Power Center can be mounted using two screws 0.187" Ø or by using industrial strength Velcro fasteners.

Footprint: 7.257" x 2.375".

Suggested minimum vertical clearance: 2.5"



Cautions:

- As with all wiring, ensure that wires flow freely with no contact with sharp objects / edges.
- Secure all wiring with cable ties, but never over-tighten cable ties. Cable ties are designed to keep the wiring in location only.
- Keep power wires separated from antenna cables or other communication cables / wires. Never cable tie them together.
- Watch that no screws or fasteners protrude onto the FMS Power Timer, the fuses, or any wiring.
- Ensure that there is sufficient clearance between the top of the LVD Power Center and any other object / casing to avoid contact.

Feedback: Thank you for your purchase and we welcome your feedback as we too want to make every accessory exceed your expectations. Report any comments, suggestions, problems or concerns to FMS Solutions, LLC at info@fmsaccessories.com.

FMS Solutions, LLC Limited Warranty

FMS Solutions, LLC warrants to the first retail purchaser of new FMS Accessory products, to be free from defects in materials or workmanship, for a period of three (3) years from the original date of purchase as noted on the FMS Solutions, LLC invoice or original dealer invoice, except for paint and powder-coated finishes, which are warranted for the first 12 months only. LED lights from Fenix, Inc., Code 3, Inc. and Littlite are covered for 5 years by their manufacturer's respective warranties – processed through FMS Solutions, LLC.

This warranty extends only to the FMS accessory and does not include: damage caused by accidents or abuse; incorrect installation; labor to diagnose, remove, repair or replace; any consequential damage or loss of use. Any FMS Accessory suspected of being defective should be returned to FMS Solutions, LLC along with a copy of proof of purchase and warranty request form available on the FMS website. FMS Solutions, LLC will determine if the FMS accessory has a warrantable defect, and if so, will repair or replace the item and return it to the sender without charge. The decision to repair or replace said item is solely the prerogative of FMS Solutions, LLC.

Note: Police motors can operate in a very rough environment since police motors are a "tool". They can be dropped, knocked-over, etc. without concern as the officer has a job to do and determines what is necessary at any given moment. Warranty is for defects in materials or workmanship. Therefore, the ability of an item to become broken or damaged does not mean it is warranty ... it just means it is broken or damaged and in need of repair or replacement. No manufacturer warrants their products to be indestructible. Any questions should be directed to info@fmsaccessories.com.